



MUSTANG HOOD SCOOP

3dCARBON™

INSTALLATION INSTRUCTIONS

QTY	PART NO.	DESCRIPTION
1	691017	HOOD SCOOP
2	3M 94	3M PRIMER 94 ADHESION PROMOTER
1	4218	3M ROLL - 93" DOUBLE FACE TAPE
1	NA	SET (RH-LH) PRE-CUT BLACK OUT DECALS

TOOLS & MATERIALS REQUIRED

- Wiping cloth
- Grease pencil or china marker
- Wax and grease remover
- Lacquer thinner
- Pen Knife

CAUTION!!!! IF A HEATED SPRAY BOOTH IS USED FOR BAKING THE PRIMER OR PAINT, DO NOT BAKE OR CURE GREATER THAN 120 F DEGREES FARENHEIT. THE PARTS CAN BE DISTORTED AND PERMANENTLY DAMAGED

PREPPING THE PART PRIOR TO PAINT

The first step is to inspect the parts to make sure you have the correct parts. Refer to the part numbers on the back of the parts to confirm the Year - Make - Model. Parts that are prepped and painted cannot be returned or exchanged.

Using lacquer thinner and a clean cloth - clean the tape flange surface on the back of each part where the double sided tape will be applied. Using 1" masking tape, apply the tape 1/8" below the top edge of the part. This will protect the tape flange from getting contaminated during the prepping and painting process.

Refer to Prepping and Painting Instructions for "Step by Step" procedures.



Note: These installation steps are for after the hood scoop is painted.

Step 1) Place the hood scoop down on a clean soft surface. Using Lacquer Thinner on a clean lint-free cloth – clean the perimeter of the hood scoop where the double face tape will be applied. Make sure there is no primer or paint overspray that will impede the adhesion of the double face tape. We do not pre install the double face tape prior to shipping the hood scoop because during the prepping and painting process the tape can be contaminated. Using the 3M Adhesion Promoter 94 tube apply of the primer to the perimeter of the hood scoop where the double face tape will be applied. Apply the double face tape to the inside of the hood scoop approximately 1/16" in from the edge. Please note that you should leave a 1/8" gap at each corner to allow the part to 'breathe' and let excess condensation to escape (See Image #1a & 1b)

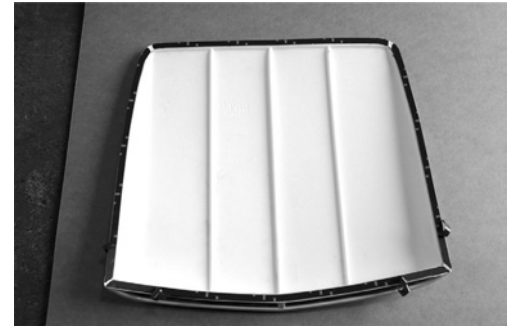


IMAGE #1a

Step 2) Place the hood scoop on the hood and position the center of the scoop directly over the center of the hood. Using a tape measure, measure 39 3/4" from the back edge of the hood to the front corner of the hood scoop. Make a second measure of 44" from the front edge of the hood to the opposite lower corner of the hood scoop. Repeat for opposite sides of each measurement. (See Image #2 – 5)

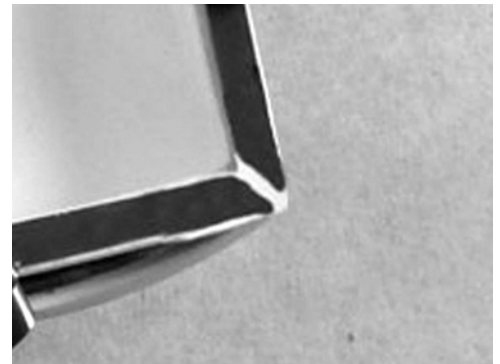


IMAGE #1b Close-Up of Gap

Step 3) Using a china marker or grease pencil, make a small mark on the front, sides and rear of the scoop and matching mark of the paint surface. These will be used for positioning the scoop for the final installation. (See Image #6)

Step 5) Remove the part from the car. Using lacquer thinner on a clean lint-free cloth, wipe the paint surface where the tape will attach. Be careful not to remove the grease pencil marks. Using the adhesion promoter supplied, apply the promoter to the paint surface where the tape will attach.

Step 6) Peel back a small portion of the red tape backing making a small tail.

Step 7) Place the scoop on the hood and position it using the grease pencil marks made as a reference. Pull the red plastic tape tail and press the hood scoop – tape to the hood surface. Be sure to press firmly onto the car to ensure good adhesion of the double sided tape.



IMAGE #2- 1ST Measure

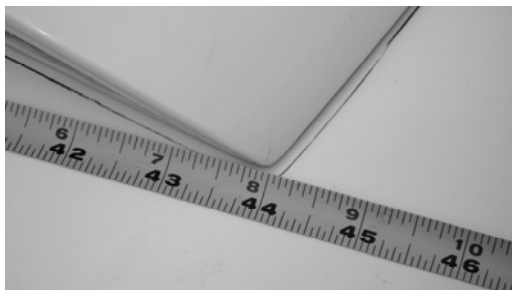


IMAGE #5
– 2ND Measure



IMAGE #3- 1ST Measure



IMAGE #6

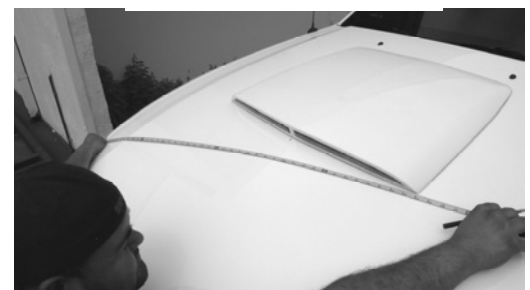


IMAGE #4- 2ND Measure