



Mon - Thurs 7:30am - 5:00pm | Friday 7:30am - 4:00pm CST

**1-800-779-2102**

**WWW.DEEZEE.COM**

**PLEASE INSPECT YOUR PRODUCT FOR DAMAGE  
BEFORE PROCEEDING TO INSTALLATION.**

**INSTRUCTIONS FOR RETURNS:**

ALL PRODUCTS NEED RETURNED TO POINT OF PURCHASE  
FOR WARRANTY DEFECTS, DAMAGES, OR RETURNS.

FOR MISSING PARTS PLEASE CONTACT DEE ZEE INC.  
1-800-779-2102

REGISTER YOUR PRODUCT ONLINE: **[www.deezee.com/registration](http://www.deezee.com/registration)**

VIEW INSTRUCTIONS ONLINE: **[www.deezee.com/instructions](http://www.deezee.com/instructions)**

## FOR INSTALLATION ON DRIVER'S SIDE ONLY



**Before returning this product to the store of purchase**

**Contact Dee Zee if you experience the following problems:**

- Missing Parts
- Installation Problems/Questions
- Warranty Questions

**1.800.779.2102**

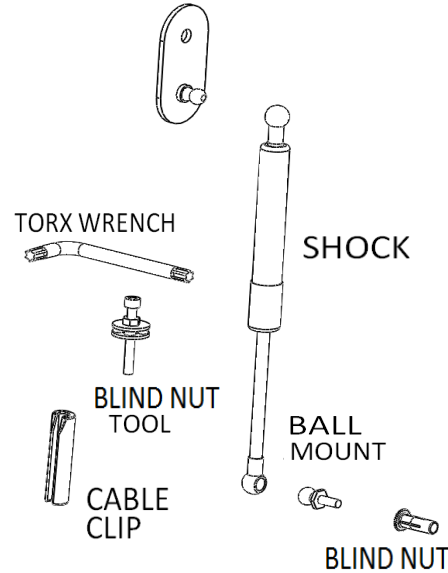
Hours of operation: 8am - 5pm CST, Mon-Friday

Review complete warranty policy and register your product at:  
[www.deeze.com](http://www.deeze.com)

DZ 43301  
DODGE RAM TAILGATE ASSIST  
1500 2009- CURRENT  
2500/3500 2010 - CURRENT



### BALL MOUNT PLATE



### PARTS LIST:

ITEM	QTY
THREAD LOCK TUBE	1
SHOCK	1
BALL MOUNT PLATE	1
BLIND NUT TOOL	1
BALL MOUNT	1
BLIND NUT / NUTSERT	1
TORX WRENCH	1
CABLE CLIP	1
MYLAR	1

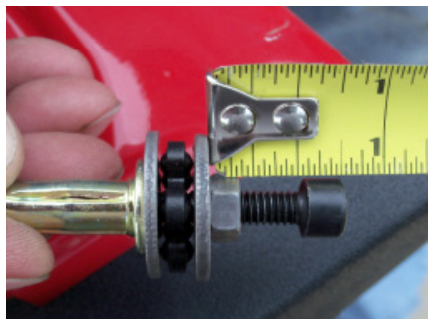
### TOOLS REQUIRED:

- T-45 TORX
- M5 ALLEN WRENCH
- TAPE MEASURE
- 10MM WRENCH
- 13MM WRENCH/SOCKET

**NOTE: THIS PRODUCT CAN ONLY BE INSTALLED ON THE DRIVER'S SIDE.**

#### STEP 1)

Adjust the nutsert tool so there is 3/4" from the washer to the head of the bolt.



#### STEP 2)

Using a M5 Allen wrench and a 10mm wrench, install the blind nut in the opening by the tailgate pivot point. The nutsert should be tightened at least nine 360 degree turns. Mark one side of the nut and count the number of revolutions to insure the correct number of turns. After the nine turns, if the blind nut can still be moved or rotates, continue tightening an additional 1 - 2 turns. Re-check blind nut, repeat as needed.

Remove the nutsert tool when installation is complete.



#### WARNING:

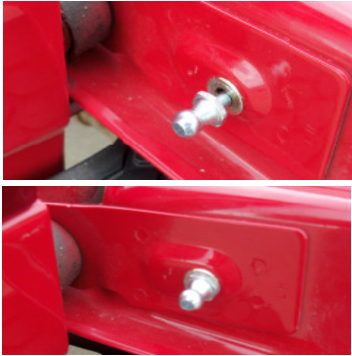
Overtightening the nutsert can strip the threads and cause the nutsert to be unusable.



## FOR INSTALLATION ON DRIVER'S SIDE ONLY

### STEP 3)

Apply thread lock to the threads of the ball mount. Install the ball mount into the nutsert using a 13mm wrench/socket. Torque to 8 ft-lbs with 13mm socket.



### STEP 4)

Use a T45 torx socket or the wrench provided to remove the cable bolt. Remove the tailgate cable from the bolt.



### STEP 5)

Install the bolt removed from the previous step through the hole in the ball mount plate back into the hole.



Tighten the bolt with the T45.

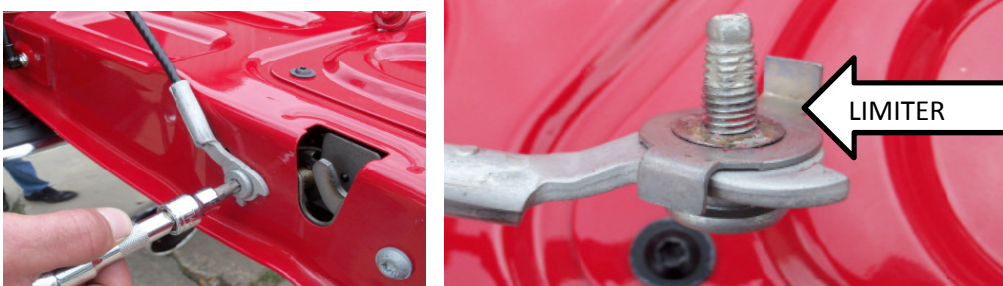
### STEP 6)

Install the cable back onto the cable bolt.



### STEP 7)

Remove the other end of the tailgate cable with the T45 torx and remove the motion limiter. The flat retaining nut must be taken off to remove the limiter. To remove the limiter, pry up one edge of the flat nut with a screwdriver. Hold this edge with a pair of pliers and spin the bolt out of it.



Once the limiter is removed, reinstall the cable mount to the tailgate.

### STEP 8)

Measure down from the top of the cable 3 1/2". This is where the cable clip needs to start. Press the clip onto the cable with a pair of pliers.



Failure to remove the limiter and to install the cable clip will cause the cable to bind or become caught between the shock and truck bed. This may lead to vehicle damage, so these steps MUST be done.

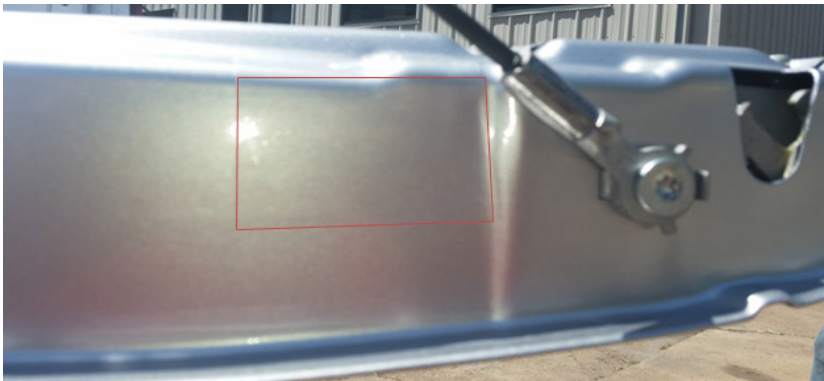


## FOR INSTALLATION ON DRIVER'S SIDE ONLY

### STEP 9)

A Mylar sheet has been provided to help prevent components from rubbing against the truck bed and tailgate in the event that any part becomes loose. Using scissors, cut the mylar to the size needed. Apply the mylar to the truck bed and tailgate where tailgate assist components will be in close proximity during opening/closing. The red lines show the area where the mylar has been installed.

The vehicle shown is an example of how the mylar can be installed. Your vehicle may differ from the vehicle shown.



### STEP 10)

Install the larger part of the shock on the ball mount plate.



Install the narrow end of the shock on the ball mount .



Periodically check the upper and lower mounting locations to insure that parts have not loosened through repeated use. If either mounting location is found to be loose, re-tighten the hardware as needed.

## FOR INSTALLATION ON DRIVER'S SIDE ONLY

### FAQ's

#### How does a nutsert/blind nut work?

The nutsert (blind nut) is the hardware that will be installed into the tailgate. As you turn the nut on the install tool, the nutsert begins to mushroom and spread out. As the fingers expand, the threads are moving closer to the edge of the tailgate to attach the mounting point for the Tailgate Assist.

#### What if nutsert continues to spin without expanding?

There are two different options to get the nutsert to start the expansion process:

- 1) Place a small amount of the blue thread lock that comes with the kit to the end of the screw. Allow the adhesive to dry. This step will keep the nutsert from spinning and allow the nutsert to expand.

OR

- 2) Place masking tape around the hole on the tailgate. This will create a rough surface for the nutsert to rest against to initiate the process by separating the two smooth surfaces of the painted truck body and flange of the nutsert.

#### Can the Tailgate Assist be installed on the passenger's side?

No. The unit will not work on the passenger side of the truck bed. The passenger side of the vehicle that has the slot that allows the tailgate to be removed.

#### Do you have installation videos?

Yes. All installation videos can be viewed at:

[WWW.DEEZEE.COM/TAILGATEASSIST](http://WWW.DEEZEE.COM/TAILGATEASSIST)